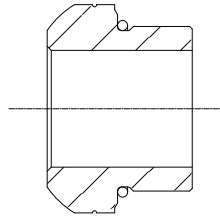




IMPORTANT NOTICE - READ CAREFULLY Flare Insert Fittings

Installation Instructions



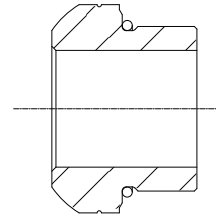
1. The A.Y. McDonald Flare Insert Fitting works only with A.Y. McDonald CTS compression bodies. Using Flare Insert Fittings Assemblies on bodies not designed for A.Y. McDonald CTS compression **WILL** cause failure. If you have any questions as to whether the fitting body is designed for A.Y. McDonald CTS compression, contact A.Y. McDonald Mfg. Co.

2. Prior to installation, inspect O-ring for cuts. Replace if necessary. Assembly of insert into body can be improved with light use of a NSF approved **silicone** lubricant on O-ring.
3. DO NOT OVERTIGHTEN NUTS.
4. Pressure test for leaks before backfilling.
5. Use only on cold water services.
6. Inserts are not designed for reuse.



IMPORTANT NOTICE - READ CAREFULLY Flare Insert Fittings

Installation Instructions



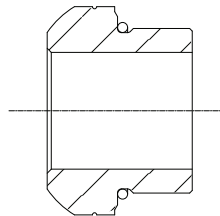
1. The A.Y. McDonald Flare Insert Fitting works only with A.Y. McDonald CTS compression bodies. Using Flare Insert Fittings Assemblies on bodies not designed for A.Y. McDonald CTS compression **WILL** cause failure. If you have any questions as to whether the fitting body is designed for A.Y. McDonald CTS compression, contact A.Y. McDonald Mfg. Co.

2. Prior to installation, inspect O-ring for cuts. Replace if necessary. Assembly of insert into body can be improved with light use of a NSF approved **silicone** lubricant on O-ring.
3. DO NOT OVERTIGHTEN NUTS.
4. Pressure test for leaks before backfilling.
5. Use only on cold water services.
6. Inserts are not designed for reuse.



IMPORTANT NOTICE - READ CAREFULLY Flare Insert Fittings

Installation Instructions



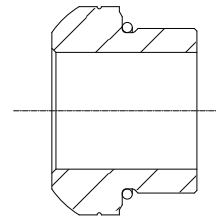
1. The A.Y. McDonald Flare Insert Fitting works only with A.Y. McDonald CTS compression bodies. Using Flare Insert Fittings Assemblies on bodies not designed for A.Y. McDonald CTS compression **WILL** cause failure. If you have any questions as to whether the fitting body is designed for A.Y. McDonald CTS compression, contact A.Y. McDonald Mfg. Co.

2. Prior to installation, inspect O-ring for cuts. Replace if necessary. Assembly of insert into body can be improved with light use of a NSF approved **silicone** lubricant on O-ring.
3. DO NOT OVERTIGHTEN NUTS.
4. Pressure test for leaks before backfilling.
5. Use only on cold water services.
6. Inserts are not designed for reuse.



IMPORTANT NOTICE - READ CAREFULLY Flare Insert Fittings

Installation Instructions



1. The A.Y. McDonald Flare Insert Fitting works only with A.Y. McDonald CTS compression bodies. Using Flare Insert Fittings Assemblies on bodies not designed for A.Y. McDonald CTS compression **WILL** cause failure. If you have any questions as to whether the fitting body is designed for A.Y. McDonald CTS compression, contact A.Y. McDonald Mfg. Co.

2. Prior to installation, inspect O-ring for cuts. Replace if necessary. Assembly of insert into body can be improved with light use of a NSF approved **silicone** lubricant on O-ring.
3. DO NOT OVERTIGHTEN NUTS.
4. Pressure test for leaks before backfilling.
5. Use only on cold water services.
6. Inserts are not designed for reuse.



IMPORTANT NOTICE - READ CAREFULLY
Flare Insert Fittings

Installation Instructions

74692 SERIES COMPRESSION CONVERSION INSERT

COMPRESSION END CONFIGURATION	CONVERSION INSERT
<ul style="list-style-type: none"> T Comp 3/4" Q Comp 3/4" -22 Comp 3/4" C903 Comp 3/4" 	74692 3/4"
<ul style="list-style-type: none"> T Comp 1" Q Comp 1" -22 Comp 1" C903 Comp 1" 	74692 1"
<ul style="list-style-type: none"> -3Q Comp 3/4" -33 Comp 3/4" -44 Comp 3/4" -55 Comp 3/4" 	74692PEP 3/4" (Stamped 3/4 PEP)
<ul style="list-style-type: none"> T Comp 1 1/4" Q Comp 1 1/4" -22 Comp 1 1/4" -3Q Comp 1" -33 Comp 1" -44 Comp 1" -55 Comp 1" 	74692 1 1/4"

WARNING: It is unlawful in CALIFORNIA & VERMONT (effective 1/1/2010); MARYLAND (effective 1/1/2012); LOUISIANA (effective 1/1/2013) and the UNITED STATES OF AMERICA (effective 1/4/2014) to use any product in the installation or repair of any public water system or any plumbing in a facility or system that provides water for human consumption if the wetted surface area of the product has a weighted average lead content greater than 0.25%. This prohibition does not extend to service saddles used in California, Louisiana or under USA Public Law 111-380.



IMPORTANT NOTICE - READ CAREFULLY
Flare Insert Fittings

Installation Instructions

74692 SERIES COMPRESSION CONVERSION INSERT

COMPRESSION END CONFIGURATION	CONVERSION INSERT
<ul style="list-style-type: none"> T Comp 3/4" Q Comp 3/4" -22 Comp 3/4" C903 Comp 3/4" 	74692 3/4"
<ul style="list-style-type: none"> T Comp 1" Q Comp 1" -22 Comp 1" C903 Comp 1" 	74692 1"
<ul style="list-style-type: none"> -3Q Comp 3/4" -33 Comp 3/4" -44 Comp 3/4" -55 Comp 3/4" 	74692PEP 3/4" (Stamped 3/4 PEP)
<ul style="list-style-type: none"> T Comp 1 1/4" Q Comp 1 1/4" -22 Comp 1 1/4" -3Q Comp 1" -33 Comp 1" -44 Comp 1" -55 Comp 1" 	74692 1 1/4"

WARNING: It is unlawful in CALIFORNIA & VERMONT (effective 1/1/2010); MARYLAND (effective 1/1/2012); LOUISIANA (effective 1/1/2013) and the UNITED STATES OF AMERICA (effective 1/4/2014) to use any product in the installation or repair of any public water system or any plumbing in a facility or system that provides water for human consumption if the wetted surface area of the product has a weighted average lead content greater than 0.25%. This prohibition does not extend to service saddles used in California, Louisiana or under USA Public Law 111-380.



IMPORTANT NOTICE - READ CAREFULLY
Flare Insert Fittings

Installation Instructions

74692 SERIES COMPRESSION CONVERSION INSERT

COMPRESSION END CONFIGURATION	CONVERSION INSERT
<ul style="list-style-type: none"> T Comp 3/4" Q Comp 3/4" -22 Comp 3/4" C903 Comp 3/4" 	74692 3/4"
<ul style="list-style-type: none"> T Comp 1" Q Comp 1" -22 Comp 1" C903 Comp 1" 	74692 1"
<ul style="list-style-type: none"> -3Q Comp 3/4" -33 Comp 3/4" -44 Comp 3/4" -55 Comp 3/4" 	74692PEP 3/4" (Stamped 3/4 PEP)
<ul style="list-style-type: none"> T Comp 1 1/4" Q Comp 1 1/4" -22 Comp 1 1/4" -3Q Comp 1" -33 Comp 1" -44 Comp 1" -55 Comp 1" 	74692 1 1/4"

WARNING: It is unlawful in CALIFORNIA & VERMONT (effective 1/1/2010); MARYLAND (effective 1/1/2012); LOUISIANA (effective 1/1/2013) and the UNITED STATES OF AMERICA (effective 1/4/2014) to use any product in the installation or repair of any public water system or any plumbing in a facility or system that provides water for human consumption if the wetted surface area of the product has a weighted average lead content greater than 0.25%. This prohibition does not extend to service saddles used in California, Louisiana or under USA Public Law 111-380.



IMPORTANT NOTICE - READ CAREFULLY
Flare Insert Fittings

Installation Instructions

74692 SERIES COMPRESSION CONVERSION INSERT

COMPRESSION END CONFIGURATION	CONVERSION INSERT
<ul style="list-style-type: none"> T Comp 3/4" Q Comp 3/4" -22 Comp 3/4" C903 Comp 3/4" 	74692 3/4"
<ul style="list-style-type: none"> T Comp 1" Q Comp 1" -22 Comp 1" C903 Comp 1" 	74692 1"
<ul style="list-style-type: none"> -3Q Comp 3/4" -33 Comp 3/4" -44 Comp 3/4" -55 Comp 3/4" 	74692PEP 3/4" (Stamped 3/4 PEP)
<ul style="list-style-type: none"> T Comp 1 1/4" Q Comp 1 1/4" -22 Comp 1 1/4" -3Q Comp 1" -33 Comp 1" -44 Comp 1" -55 Comp 1" 	74692 1 1/4"

WARNING: It is unlawful in CALIFORNIA & VERMONT (effective 1/1/2010); MARYLAND (effective 1/1/2012); LOUISIANA (effective 1/1/2013) and the UNITED STATES OF AMERICA (effective 1/4/2014) to use any product in the installation or repair of any public water system or any plumbing in a facility or system that provides water for human consumption if the wetted surface area of the product has a weighted average lead content greater than 0.25%. This prohibition does not extend to service saddles used in California, Louisiana or under USA Public Law 111-380.